
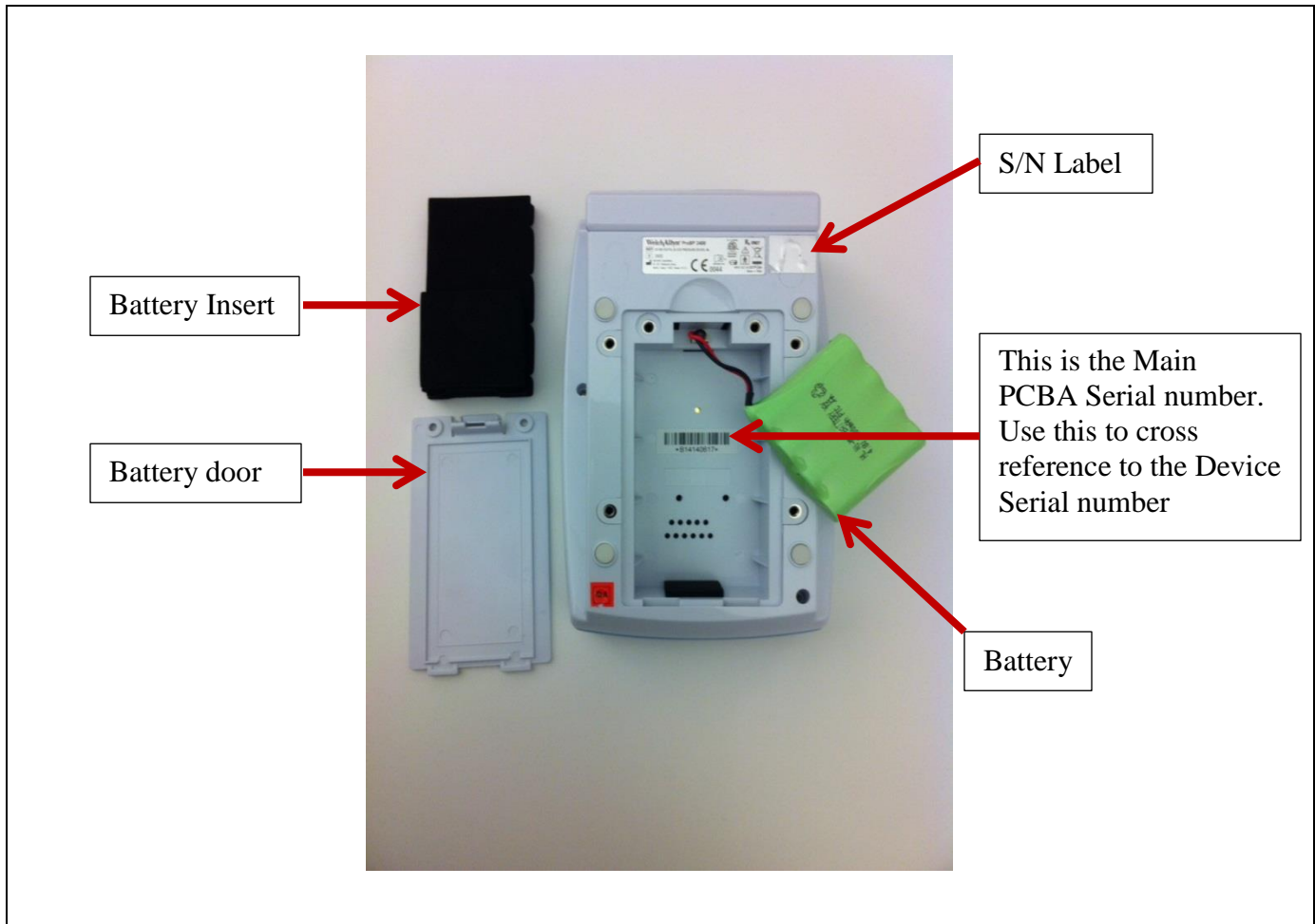


Document Description: TSB-PROBP-2400 SERIAL NUMBER IDENTIFICATION	Document Number: 20014014 Version: A
	Page 1 of 4
Printed or electronic versions of this document not accessed directly from the designated Welch Allyn Controlled Quality Information System are For Reference Only.	

<h2 style="margin: 0;">Technical Service Bulletin</h2>	
Product: PROBP-2400	Date: 2015-06-05
Subject: PROBP-2400 SERIAL NUMBER IDENTIFICATION	
HW Version(s) Affected: ALL	SW Version(s) Affected: P70
Serial Numbers Affected: 07150003 - 07150620	Lot or Date Code Affected: N/A
Classification: As Needed	
Distribution: <input checked="" type="checkbox"/> Customer Care <input checked="" type="checkbox"/> Product Service <input checked="" type="checkbox"/> Field Service <input checked="" type="checkbox"/> ASPs <input type="checkbox"/> Distributors <input type="checkbox"/> Customers <input checked="" type="checkbox"/> Company Confidential	
<u>THIS DOCUMENT CONTAINS CONFIDENTIAL INFORMATION</u> It can be distributed or made available to only those individuals, companies, and organizations which have current Welch Allyn Confidentiality Agreements, and have a need to know.	
Training Required: <input checked="" type="checkbox"/> Yes <input type="checkbox"/> No	
Summary: In order to determine warranty for a customer, the Serial number of the device must be provided. Should a customer call and indicate that they can't locate or provide a serial number for the device, follow this simple procedure to locate the Serial number for the customer: <ol style="list-style-type: none"> 1) Ask the customer to open the battery door using a small phillips screwdriver. 2) Lift the battery and foam insert to view the Main PCBA Serial number label. 3) The label located in the center of the battery compartment (refer to picture on the next page) is the Serial number of the Main PCBA. 4) Record that Serial number and using the Cross reference list on the next page find the Main PCBA Serial number in that column. In the Device SN column the Serial number for the device is recorded. 	

20014014A TSB-PROBP-2400 SERIAL NUMBER IDENTIFICATION

THIS INFORMATION IS THE PROPERTY OF WELCH ALLYN, INC. AND AS SUCH SHALL NOT BE REPRODUCED, COPIED, OR USED AS A BASIS FOR THE MANUFACTURE OR SALE OF EQUIPMENT OR DEVICES WITHOUT THE EXPRESS WRITTEN PERMISSION OF WELCH ALLYN, INC.	
MPD FCD-1482 Rev 8	



MAIN PCBA Barcode to DEVICE SN list 2015-09-17 (Sorted by <u>Device S/N</u>)					
Main PCBA Barcode	Device SN	Main PCBA Barcode	Device SN	Main PCBA Barcode	Device SN
B06150558	07150003	B06150291	07150179	B06150415	07150417
B06150480	07150005	B06150153	07150184	B06150421	07150425
B06150543	07150006	B06150158	07150186	B06150449	07150426
B06150516	07150008	B06150071	07150189	B06150020	07150431
B06150458	07150016	B06150162	07150192	B06150439	07150433
B06150464	07150025	B06150052	07150194	B06150360	07150436
B06150510	07150026	B06150082	07150197	B06150467	07150438



Printed or electronic versions of this document not accessed directly from the designated Welch Allyn Controlled Quality Information System are For Reference Only.

MAIN PCBA Barcode to DEVICE SN list 2015-09-17
(Sorted by Device S/N)

Main PCBA Barcode	Device SN	Main PCBA Barcode	Device SN	Main PCBA Barcode	Device SN
B06150446	07150027	B06150345	07150200	B06150422	07150439
B06150525	07150030	B06150334	07150201	B06150018	07150444
B06150440	07150031	B06150152	07150202	B06150211	07150445
B06150408	07150034	B06150271	07150204	B06150200	07150447
B06150546	07150039	B06150302	07150206	B06150374	07150458
B06150509	07150040	B06150325	07150210	B06150383	07150465
B06150456	07150042	B06150331	07150212	B06150026	07150469
B06150548	07150046	B06150336	07150215	B06150228	07150470
B06150527	07150047	B06150321	07150221	B06150048	07150474
B06150517	07150048	B06150277	07150223	B06150488	07150478
B06150459	07150049	B06150290	07150233	B06150007	07150486
B06150479	07150050	B06150251	07150241	B06150520	07150487
B06150506	07150054	B06150406	07150242	B06150122	07150488
B06150624	07150055	B06150258	07150245	B06150134	07150489
B06150542	07150056	B06150333	07150250	B06150533	07150492
B06150416	07150060	B06150299	07150257	B06150075	07150495
B06150545	07150061	B06150337	07150259	B06150550	07150510
B06150549	07150064	B06150182	07150261	B06150430	07150512
B06150534	07150065	B06150183	07150263	B06150451	07150514
B06150470	07150070	B06150072	07150264	B06150445	07150519
B06150466	07150078	B06150335	07150271	B06150557	07150523
B06150523	07150080	B06150358	07150278	B06150128	07150528
B06150428	07150090	B06150170	07150283	B06150448	07150530
B06150453	07150104	B06150168	07150287	B06150146	07150532
B06150404	07150106	B06150238	07150291	B06150532	07150533
B06150420	07150107	B06150353	07150295	B06150109	07150535
B06150526	07150112	B06150246	07150296	B06150491	07150538
B06150528	07150114	B06150237	07150302	B06150086	07150539
B06150505	07150118	B06150330	07150303	B06150087	07150542

THIS INFORMATION IS THE PROPERTY OF WELCH ALLYN, INC. AND AS SUCH SHALL NOT BE REPRODUCED, COPIED, OR USED AS A BASIS FOR THE MANUFACTURE OR SALE OF EQUIPMENT OR DEVICES WITHOUT THE EXPRESS WRITTEN PERMISSION OF WELCH ALLYN, INC.

MAIN PCBA Barcode to DEVICE SN list 2015-09-17 (Sorted by <u>Device S/N</u>)					
Main PCBA Barcode	<u>Device SN</u>	Main PCBA Barcode	<u>Device SN</u>	Main PCBA Barcode	<u>Device SN</u>
B06150397	07150120	B06150370	07150304	B06150073	07150548
B06150502	07150122	B06150235	07150306	B06150147	07150552
B06150393	07150123	B06150226	07150309	B06150250	07150554
B06150415	07150124	B06150289	07150311	B06150281	07150557
B14140487	07150127	B06150265	07150322	B06150063	07150559
B14140407	07150128	B06150213	07150324	B06150191	07150560
B14140427	07150130	B06150234	07150329	B06150022	07150561
B14140455	07150131	B06150216	07150336	B06150410	07150562
B14140454	07150133	B06150093	07150338	B06150538	07150564
B14140435	07150137	B06150243	07150342	B06150487	07150565
B14140418	07150138	B06150012	07150346	B06150376	07150566
B14140513	07150140	B06150308	07150348	B06150107	07150570
B14140394	07150141	B06150099	07150357	B06150129	07150577
B14140477	07150143	B06150166	07150365	B06150037	07150582
B14140481	07150146	B06150101	07150369	B06150219	07150584
B14140411	07150150	B06150338	07150370	B06150514	07150587
B14140475	07150151	B06150398	07150380	B06150508	07150594
B14140442	07150153	B06150106	07150383	B06150677	07150598
B14140423	07150155	B06150110	07150390	B06150667	07150601
B06150287	07150162	B06150365	07150406	B06150603	07150608
B06150155	07150164	B06150249	07150411	B06150497	07150619
B06150326	07150170	B06150471	07150412	B06150664	07150620
B06150307	07150171	B06150230	07150414		

Version	Sec, Pg, Para Changed	Change Made	Date Version Created	Version Created By (initials)
A	N/A	Initial Release	2015-10-01	MEB